

H A B I T A T


RESIDENCES



HABITAT



With its luxurious space and choice fittings, the Habitat is built for the comfort of your family. Cast your eyes over the well-appointed fittings & appliances as you take in the ample living spaces. Cook up a storm in the sizeable enclosed kitchen and tuck into the sumptuous spread at the large balcony for dining under the stars. With only four of such units per floor, it's a private sanctuary for everyone to enjoy individual or family time together.

BUILT FOR THE MODERN FAMILY

We understand the stresses of modern living, which is why we offer a myriad of services and activities such as a childcare centre, enrichment classes, supermarket, F&B and more available at The Poiz Centre. This, together with the variety of good schools from international, primary to tertiary level makes the Habitat the perfect abode to nurture your family in.





HABITAT DIAGRAMMATIC UNIT DISTRIBUTION CHART

| | | 2 Meyappa Chettiar Road Singapore 358472 | | | |
|------|-----|---|--------|--------|-------|
| UNIT | FLR | 1 | 2 | 3 | 4 |
| 18 | | H C2r | H C2ar | H C1ar | H C1r |
| 17 | | H C2 | H C2a | H C1a | H C1 |
| 16 | | H C2 | H C2a | H C1a | H C1 |
| 15 | | H C2 | H C2a | H C1a | H C1 |
| 14 | | H C2 | H C2a | H C1a | H C1 |
| 13 | | H C2 | H C2a | H C1a | H C1 |
| 12 | | H C2 | H C2a | H C1a | H C1 |
| 11 | | H C2 | H C2a | H C1a | H C1 |
| 10 | | H C2 | H C2a | H C1a | H C1 |
| 9 | | H C2 | H C2a | H C1a | H C1 |
| 8 | | H C2 | H C2a | H C1a | H C1 |
| 7 | | H C2 | H C2a | H C1a | H C1 |
| 6 | | H C2 | H C2a | H C1a | H C1 |
| 5 | | H C2 | H C2a | H C1a | H C1 |
| 4 | | H C2p | H C2ap | H C1ap | H C1p |
| 3 | | RESIDENTIAL CARPARK | | | |
| 2 | | RESIDENTIAL CARPARK | | | |
| 1 | | SHOPS | | | |

| 4 Meyappa Chettiar Road Singapore 358453 | | |
|---|--------|-------|
| 5 | 6 | 7 |
| H C3r | H BS1r | H C3r |
| H C3 | H BS1 | H C3 |
| H C3 | H BS1 | H C3 |
| H C3 | H BS1 | H C3 |
| H C3 | H BS1 | H C3 |
| H C3 | H BS1 | H C3 |
| H C3 | H BS1 | H C3 |
| H C3 | H BS1 | H C3 |
| H C3 | H BS1 | H C3 |
| H C3 | H BS1 | H C3 |
| H C3 | H BS1 | H C3 |
| H C3 | H BS1 | H C3 |
| H C3 | H BS1 | H C3 |
| H C3 | H BS1 | H C3 |
| H C3 | H BS1 | H C3 |
| H C3 | H BS1 | H C3 |
| H C3 | H BS1 | H C3 |
| H C3p | H BS1p | H C3p |
| RESIDENTIAL CARPARK | | |
| RESIDENTIAL CARPARK | | |
| SHOPS | | |

| 6 Meyappa Chettiar Road Singapore 358454 | | | |
|---|---------|--------------|---------|
| 8 | 11 | 9 | 10 |
| PH1 (#18-08) | | PH2 (#18-09) | |
| HD1(1) | H C2(1) | H C2a(1) | HD1a(1) |
| HD1(1) | H C2(1) | H C2a(1) | HD1a(1) |
| HD1 | H C2 | H C2a | HD1a |
| HD1 | H C2 | H C2a | HD1a |
| HD1(1) | H C2(1) | H C2a(1) | HD1a(1) |
| HD1(1) | H C2(1) | H C2a(1) | HD1a(1) |
| HD1 | H C2 | H C2a | HD1a |
| HD1 | H C2 | H C2a | HD1a |
| HD1(1) | H C2(1) | H C2a(1) | HD1a(1) |
| HD1(1) | H C2(1) | H C2a(1) | HD1a(1) |
| HD1 | H C2 | H C2a | HD1a |
| HD1 | H C2 | H C2a | HD1a |
| HD1(1) | H C2(1) | H C2a(1) | HD1a(1) |
| HD1(1) | H C2(1) | H C2a(1) | HD1a(1) |
| HD1 | H C2 | H C2a | HD1a |
| HD1 | H C2 | H C2a | HD1a |
| VOID | | | |
| VOID | | | |
| RESIDENTIAL CARPARK | | | |
| RESIDENTIAL CARPARK | | | |
| SHOPS | | | |

| 8 Meyappa Chettiar Road Singapore 358455 | | | |
|---|---------|--------------|---------|
| 12 | 15 | 13 | 14 |
| PH1 (#18-12) | | PH2 (#18-13) | |
| HD1(1) | H C2(1) | H C2a(1) | HD1a(1) |
| HD1(1) | H C2(1) | H C2a(1) | HD1a(1) |
| HD1 | H C2 | H C2a | HD1a |
| HD1 | H C2 | H C2a | HD1a |
| HD1(1) | H C2(1) | H C2a(1) | HD1a(1) |
| HD1(1) | H C2(1) | H C2a(1) | HD1a(1) |
| HD1 | H C2 | H C2a | HD1a |
| HD1 | H C2 | H C2a | HD1a |
| HD1(1) | H C2(1) | H C2a(1) | HD1a(1) |
| HD1(1) | H C2(1) | H C2a(1) | HD1a(1) |
| HD1 | H C2 | H C2a | HD1a |
| HD1 | H C2 | H C2a | HD1a |
| HD1(1) | H C2(1) | H C2a(1) | HD1a(1) |
| HD1(1) | H C2(1) | H C2a(1) | HD1a(1) |
| HD1 | H C2 | H C2a | HD1a |
| HD1 | H C2 | H C2a | HD1a |
| HD1p | H C2p1 | H C2ap | HD1ap |
| SHOPS | | | |
| RESIDENTIAL CARPARK | | | |
| SHOPS | | | |

Legend

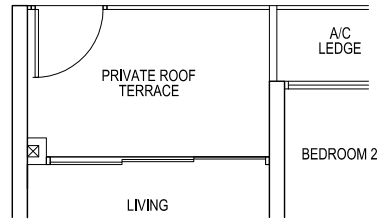
- B** 2-bedroom
- C** 3-bedroom
- D** 4-bedroom
- PH** penthouse

TYPE H BS1p

2-BEDROOM + STUDY

Total Area = 77 sqm

#04-06

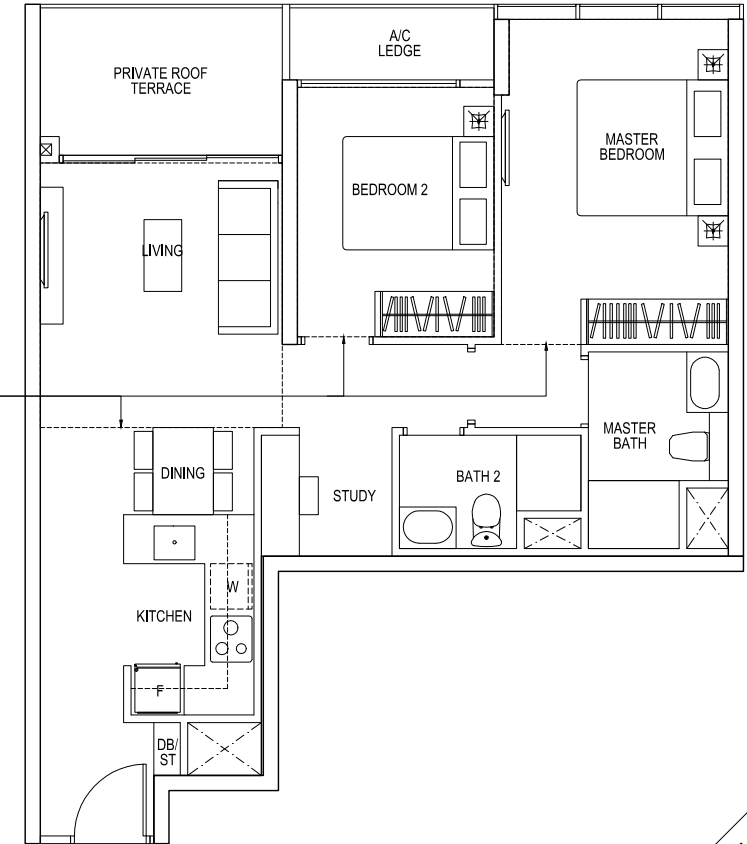


TYPE H BS1r

2-BEDROOM + STUDY

Total Area = 113 sqm
(Including Void Area of 36 sqm)

#18-06 HIGH CEILING



dotted line denotes void area of 36 sqm above living and bedrooms

TYPE H BS1

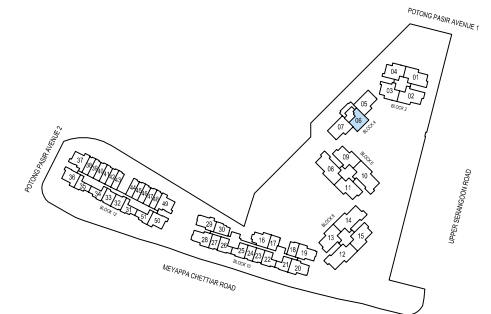
2-BEDROOM + STUDY

Total Area = 77 sqm

#05-06 to #17-06



Area includes A/C ledge, balcony, private roof terrace and void area. Some units are mirror images of the apartment plans shown in the brochure. Please refer to the key plans for orientation. The plans are subject to change as may be approved by the relevant authorities. All floor areas are approximate measurements only and are subject to government resurvey. Abbreviation: A/C ledge (Aircon Ledge), Private Roof Terrace, ST (Store), DB (Distribution Board), F (Fridge), W (Washing Machine).

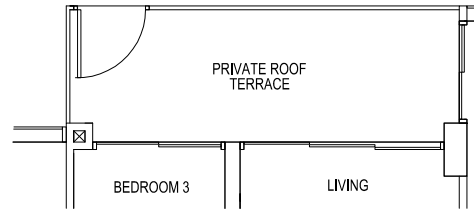


TYPE H C1p

3-BEDROOM

Total Area = 87 sqm

#04-04

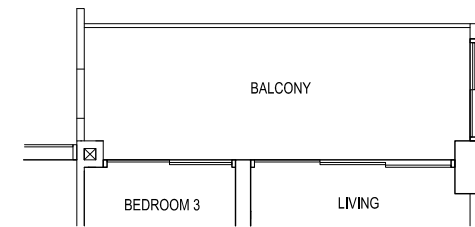
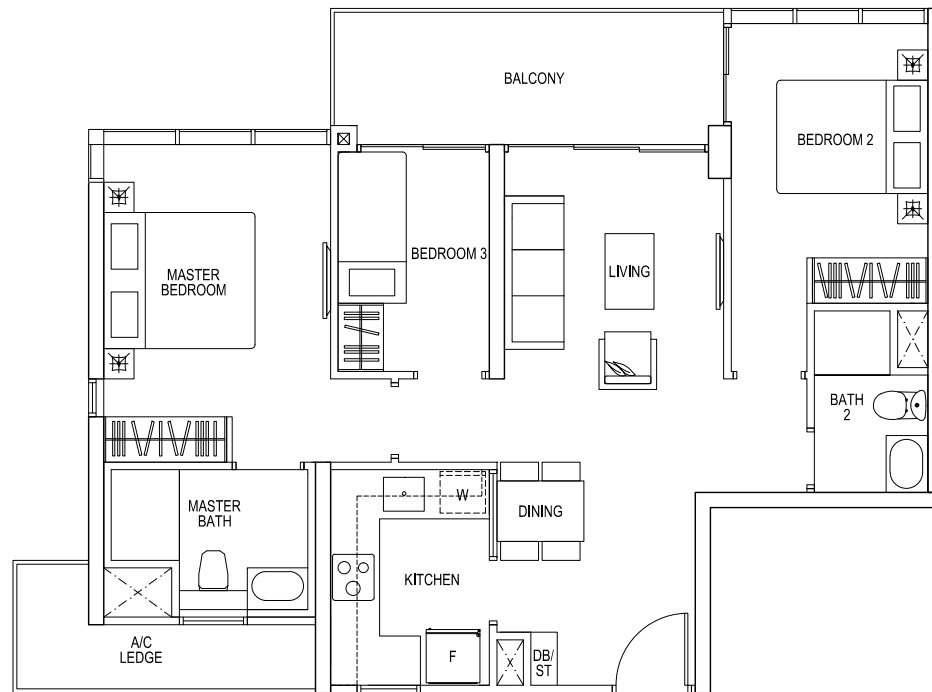


TYPE H C1

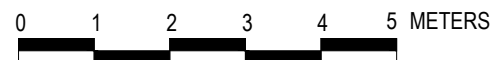
3-BEDROOM

Total Area = 87 sqm

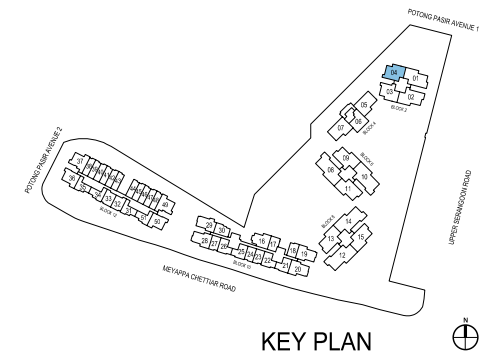
#05-04, #07-04
 #09-04, #11-04
 #13-04, #15-04
 #17-04



#06-04, #08-04
 #10-04, #12-04
 #14-04, #16-04



Area includes A/C ledge, balcony, private roof terrace and void area. Some units are mirror images of the apartment plans shown in the brochure. Please refer to the key plans for orientation. The plans are subject to change as may be approved by the relevant authorities. All floor areas are approximate measurements only and are subject to government resurvey. Abbreviation: A/C ledge (Aircon Ledge), Private Roof Terrace, ST (Store), DB (Distribution Board), F (Fridge), W (Washing Machine).



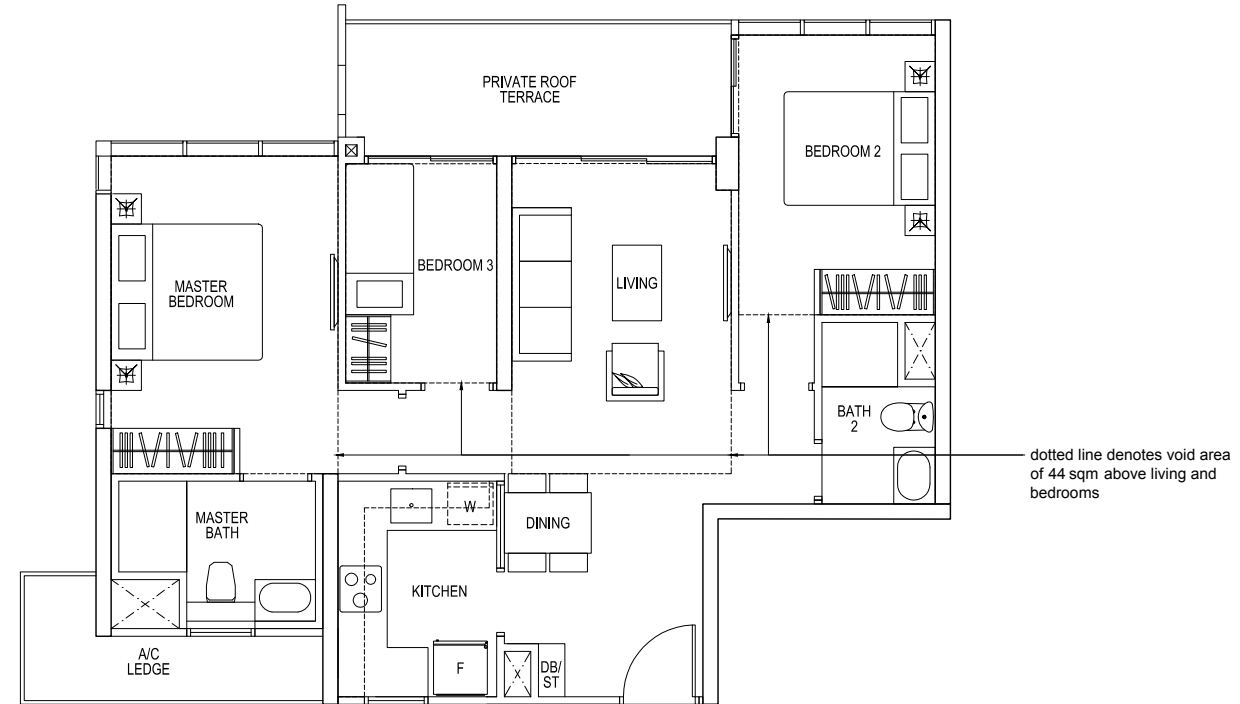
KEY PLAN

TYPE H C1r

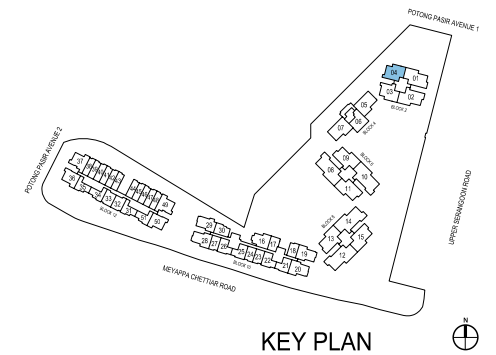
3-BEDROOM

Total Area = 131 sqm
(Including Void Area of 44 sqm)

#18-04 HIGH CEILING



Area includes A/C ledge, balcony, private roof terrace and void area. Some units are mirror images of the apartment plans shown in the brochure. Please refer to the key plans for orientation. The plans are subject to change as may be approved by the relevant authorities. All floor areas are approximate measurements only and are subject to government resurvey. Abbreviation: A/C ledge (Aircon Ledge), Private Roof Terrace, ST (Store), DB (Distribution Board), F (Fridge), W (Washing Machine).



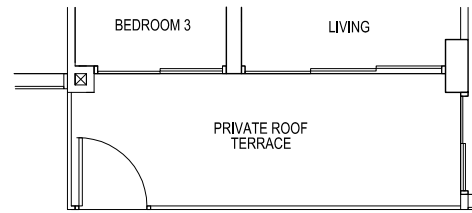
KEY PLAN

TYPE H C1ap

3-BEDROOM

Total Area = 90 sqm

#04-03

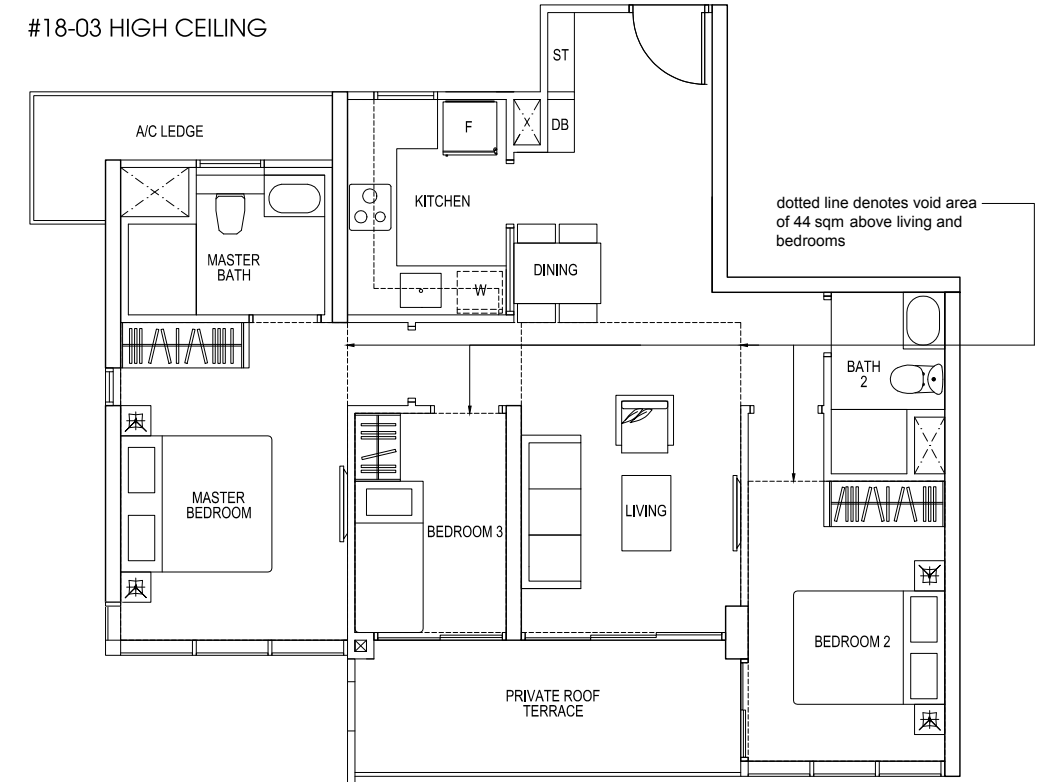


TYPE H C1ar

3-BEDROOM

Total Area = 134 sqm
(Including Void Area of 44 sqm)

#18-03 HIGH CEILING



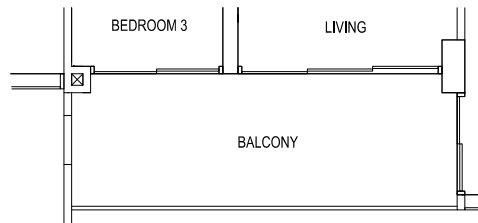
TYPE H C1a

3-BEDROOM

Total Area = 90 sqm

#05-03, #07-03, #09-03, #11-03

#13-03, #15-03, #17-03

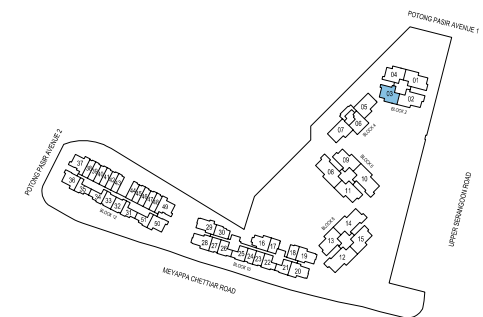


#06-03, #08-03, #10-03, #12-03

#14-03, #16-03



Area includes A/C ledge, balcony, private roof terrace and void area. Some units are mirror images of the apartment plans shown in the brochure. Please refer to the key plans for orientation. The plans are subject to change as may be approved by the relevant authorities. All floor areas are approximate measurements only and are subject to government resurvey. Abbreviation: A/C ledge (Aircon Ledge), Private Roof Terrace, ST (Store), DB (Distribution Board), F (Fridge), W (Washing Machine).



KEY PLAN

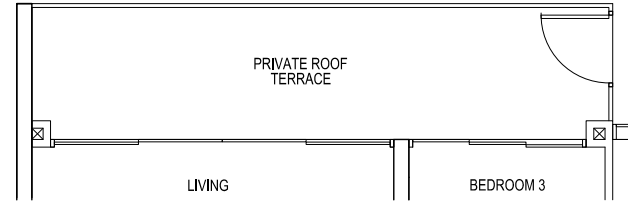


TYPE H C2p1

3-BEDROOM

Total Area = 107 sqm

#04-15 (MIRROR)

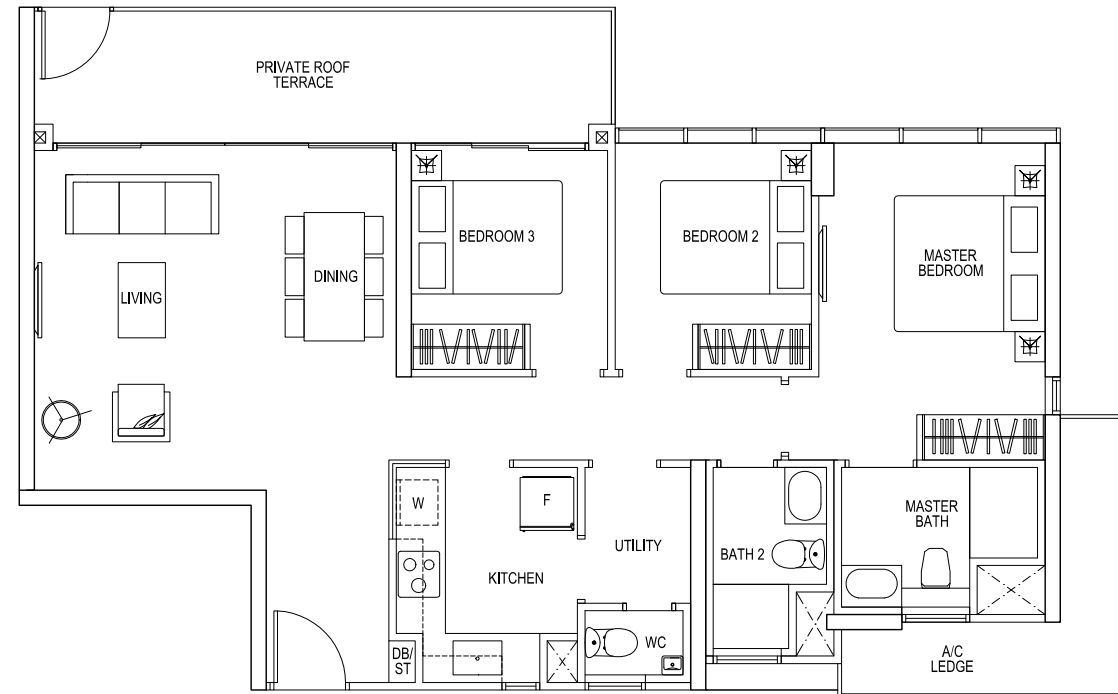


TYPE H C2p

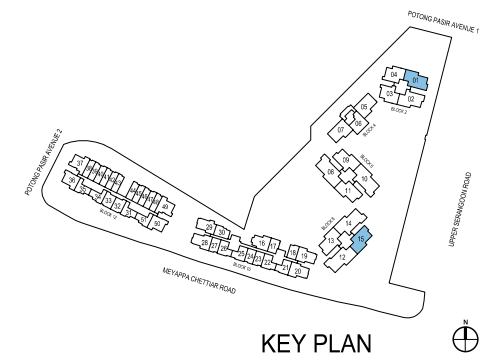
3-BEDROOM

Total Area = 107 sqm

#04-01



Area includes A/C ledge, balcony, private roof terrace and void area. Some units are mirror images of the apartment plans shown in the brochure. Please refer to the key plans for orientation. The plans are subject to change as may be approved by the relevant authorities. All floor areas are approximate measurements only and are subject to government resurvey. Abbreviation: A/C ledge (Aircon Ledge), Private Roof Terrace, ST (Store), DB (Distribution Board), F (Fridge), W (Washing Machine).



TYPE H C2

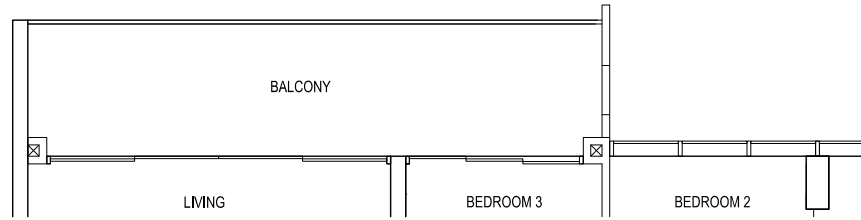
3-BEDROOM

Total Area = 107 sqm

#06-01, #08-01, #10-01, #12-01,
#14-01, #16-01

#06-11, #10-11, #14-11 (MIRROR)

#06-15, #10-15, #14-15 (MIRROR)



TYPE H C2

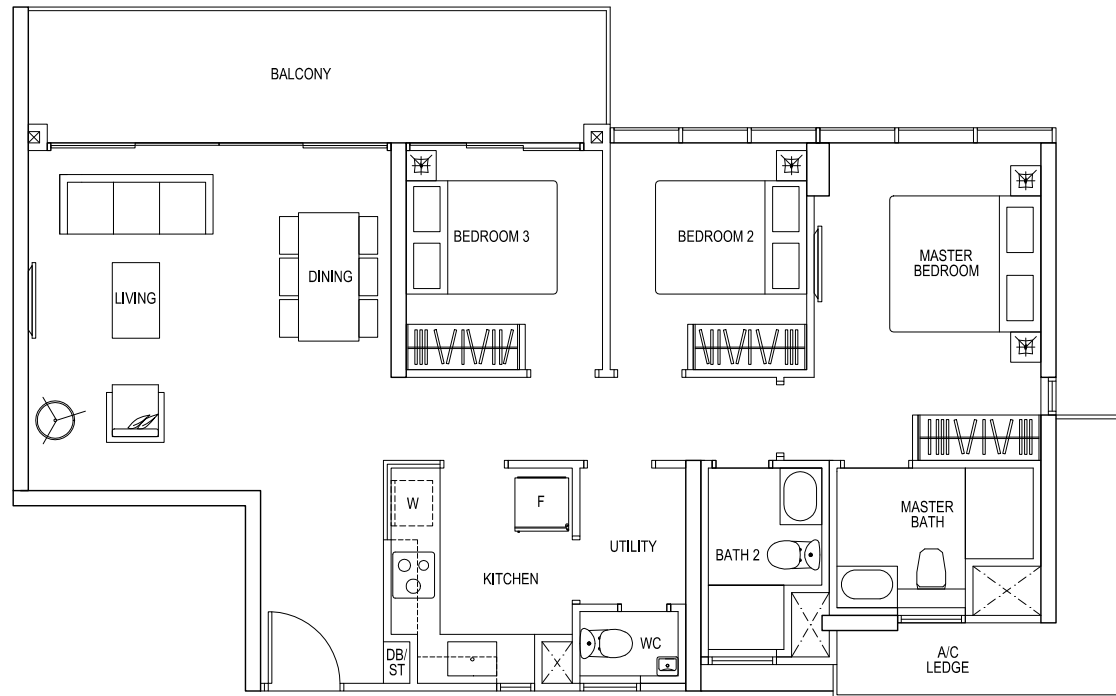
3-BEDROOM

Total Area = 107 sqm

#05-01, #07-01, #09-01, #11-01,
#13-01, #15-01, #17-01

#07-11, #11-11, #15-11 (MIRROR)

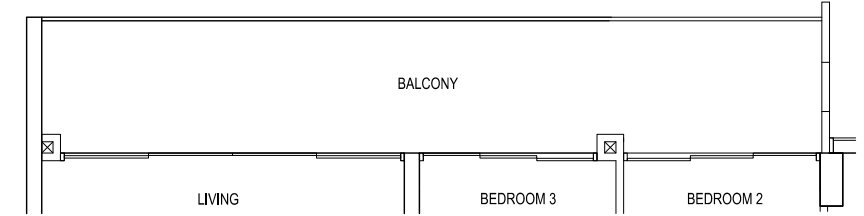
#05-15, #07-15, #11-15,
#15-15 (MIRROR)



TYPE H C2(1)

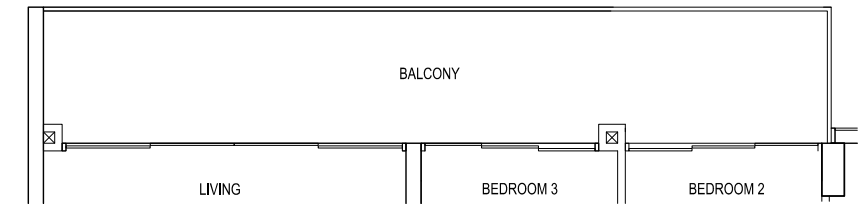
3-BEDROOM

Total Area = 112 sqm



#08-11, #12-11, #16-11 (MIRROR)

#08-15, #12-15, #16-15 (MIRROR)

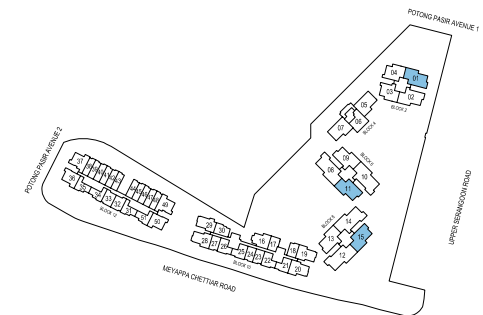


#09-11, #13-11, #17-11 (MIRROR)

#09-15, #13-15, #17-15 (MIRROR)



Area includes A/C ledge, balcony, private roof terrace and void area. Some units are mirror images of the apartment plans shown in the brochure. Please refer to the key plans for orientation. The plans are subject to change as may be approved by the relevant authorities. All floor areas are approximate measurements only and are subject to government resurvey. Abbreviation: A/C ledge (Aircon Ledge), Private Roof Terrace, ST (Store), DB (Distribution Board), F (Fridge), W (Washing Machine).



KEY PLAN

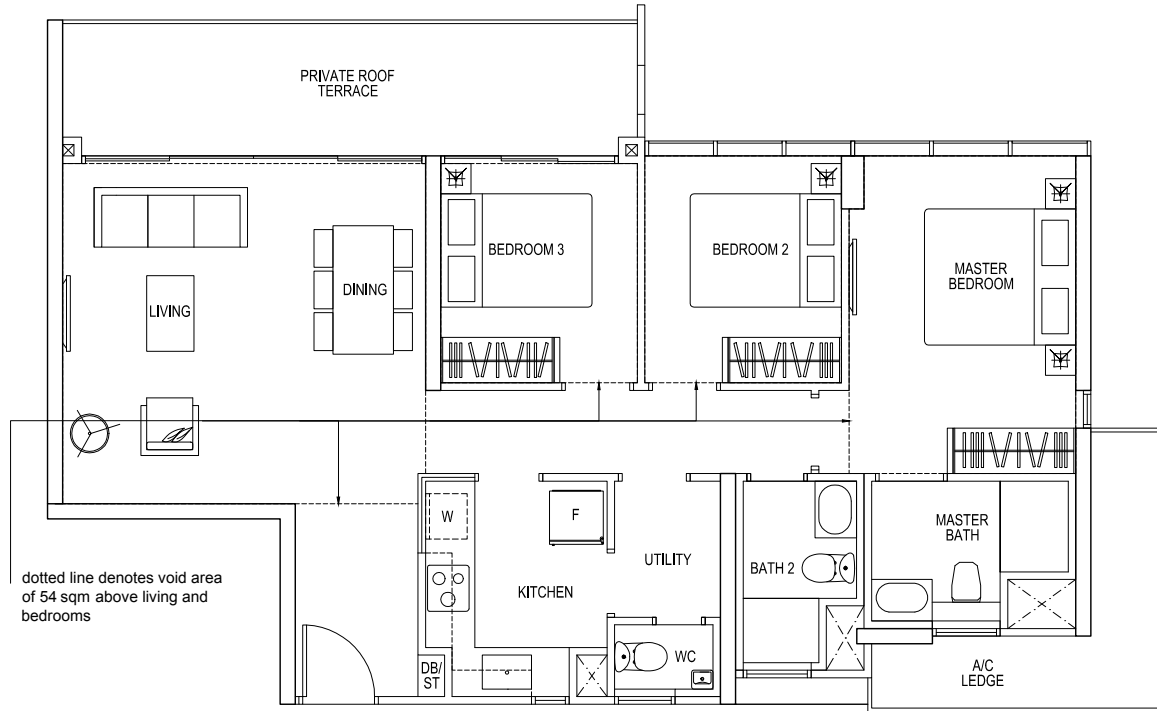


TYPE H C2r

3-BEDROOM

Total Area = 161 sqm
(Including Void Area of 54 sqm)

#18-01 HIGH CEILING



dotted line denotes void area of 54 sqm above living and bedrooms



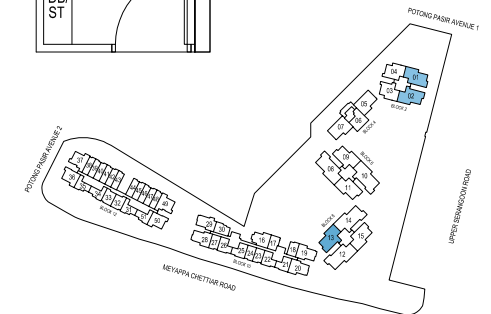
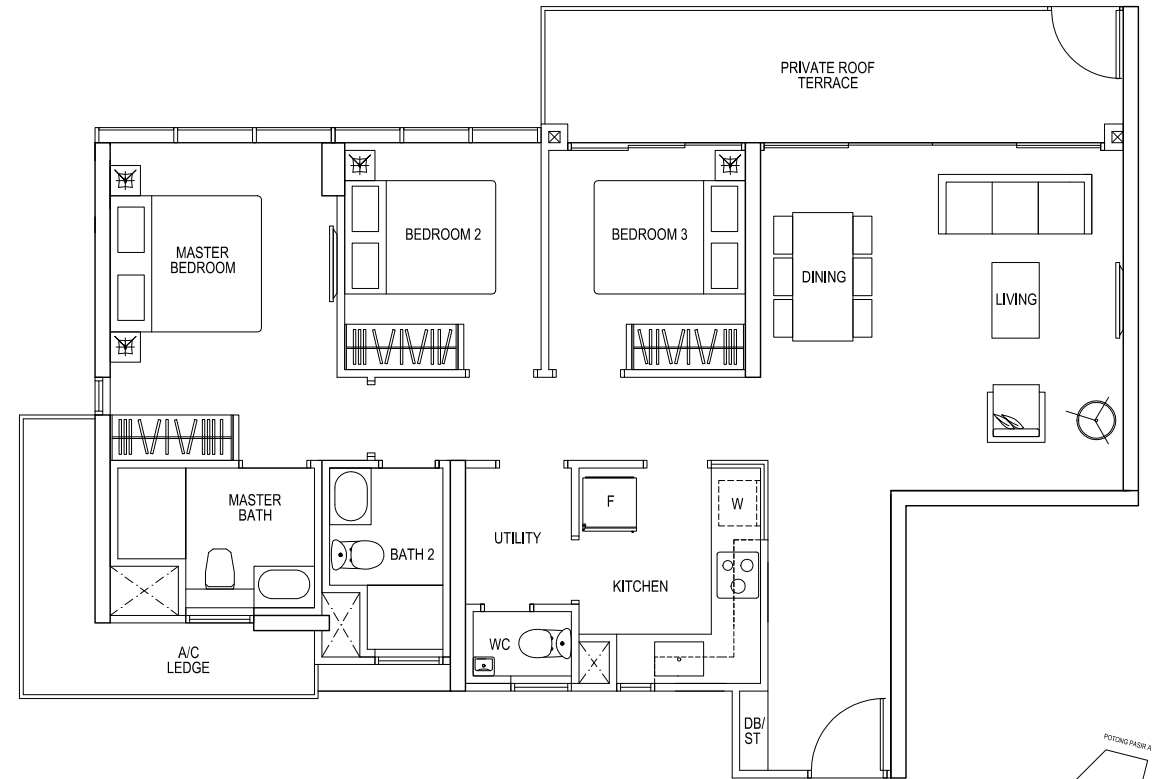
TYPE H C2ap

3-BEDROOM

Total Area = 110 sqm

#04-02

#04-13



KEY PLAN



Area includes A/C ledge, balcony, private roof terrace and void area. Some units are mirror images of the apartment plans shown in the brochure. Please refer to the key plans for orientation. The plans are subject to change as may be approved by the relevant authorities. All floor areas are approximate measurements only and are subject to government resurvey. Abbreviation: A/C ledge (Aircon Ledge), Private Roof Terrace, ST (Store), DB (Distribution Board), F (Fridge), W (Washing Machine).

TYPE H C2a

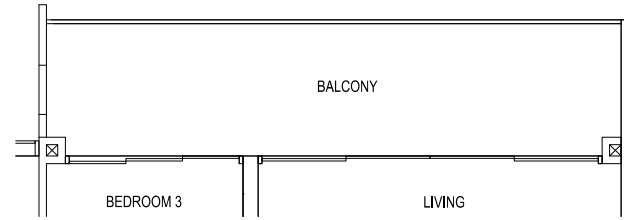
3-BEDROOM

Total Area = 110 sqm

#06-02, #08-02, #10-02, #12-02,
#14-02, #16-02

#06-09, #10-09, #14-09

#06-13, #10-13, #14-13



#05-02, #07-02, #09-02, #11-02,
#13-02, #15-02, #17-02

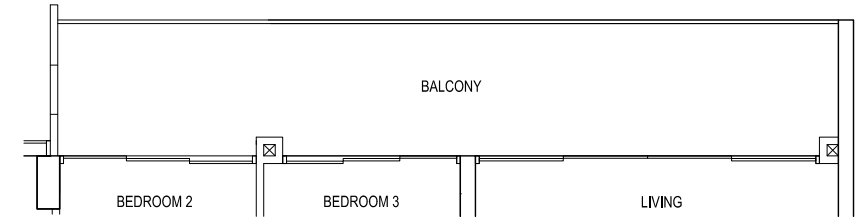
#07-09, #11-09, #15-09

#05-13, #07-13, #11-13, #15-13

TYPE H C2a(1)

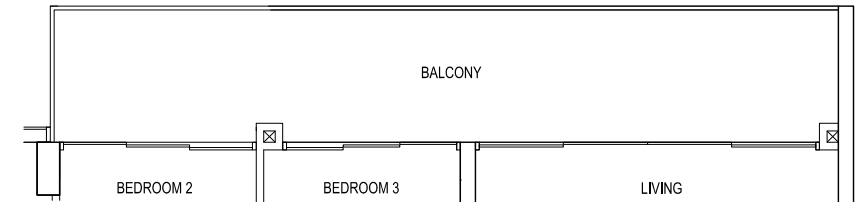
3-BEDROOM

Total Area = 114 sqm



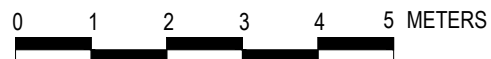
#08-09, #12-09, #16-09

#08-13, #12-13, #16-13

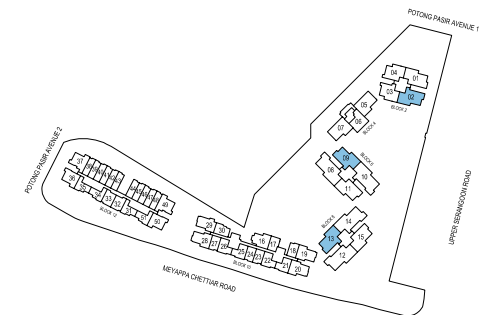


#09-09, #13-09, #17-09

#09-13, #13-13, #17-13



Area includes A/C ledge, balcony, private roof terrace and void area. Some units are mirror images of the apartment plans shown in the brochure. Please refer to the key plans for orientation. The plans are subject to change as may be approved by the relevant authorities. All floor areas are approximate measurements only and are subject to government resurvey. Abbreviation: A/C ledge (Aircon Ledge), Private Roof Terrace, ST (Store), DB (Distribution Board), F (Fridge), W (Washing Machine).



KEY PLAN



TYPE H C2ar

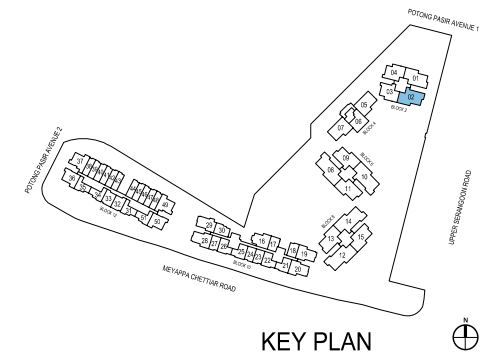
3-BEDROOM

Total Area = 164 sqm
(Including Void Area of 54 sqm)

#18-02 HIGH CEILING



Area includes A/C ledge, balcony, private roof terrace and void area. Some units are mirror images of the apartment plans shown in the brochure. Please refer to the key plans for orientation. The plans are subject to change as may be approved by the relevant authorities. All floor areas are approximate measurements only and are subject to government resurvey. Abbreviation: A/C ledge (Aircon Ledge), Private Roof Terrace, ST (Store), DB (Distribution Board), F (Fridge), W (Washing Machine).



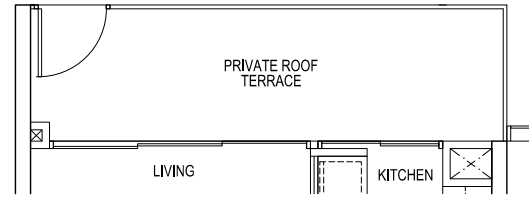
TYPE H C3p

3-BEDROOM

Total Area = 103 sqm

#04-05 (MIRROR)

#04-07



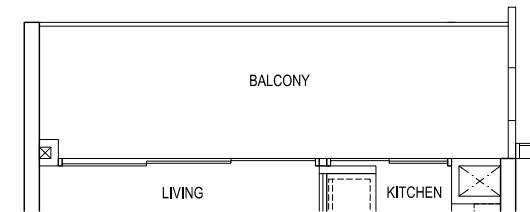
TYPE H C3

3-BEDROOM

Total Area = 103 sqm

#05-05, #07-05, #09-05, #11-05, #13-05,
#15-05, #17-05 (MIRROR)

#05-07, #07-07, #09-07, #11-07, #13-07,
#15-07, #17-07

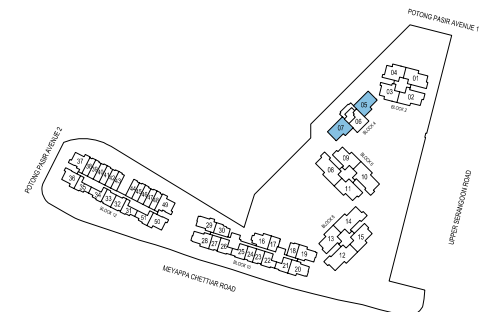


#06-05, #08-05, #10-05, #12-05, #14-05,
#16-05 (MIRROR)

#06-07, #08-07, #10-07, #12-07, #14-07,
#16-07



Area includes A/C ledge, balcony, private roof terrace and void area. Some units are mirror images of the apartment plans shown in the brochure. Please refer to the key plans for orientation. The plans are subject to change as may be approved by the relevant authorities. All floor areas are approximate measurements only and are subject to government resurvey. Abbreviation: A/C ledge (Aircon Ledge), Private Roof Terrace, ST (Store), DB (Distribution Board), F (Fridge), W (Washing Machine).



KEY PLAN



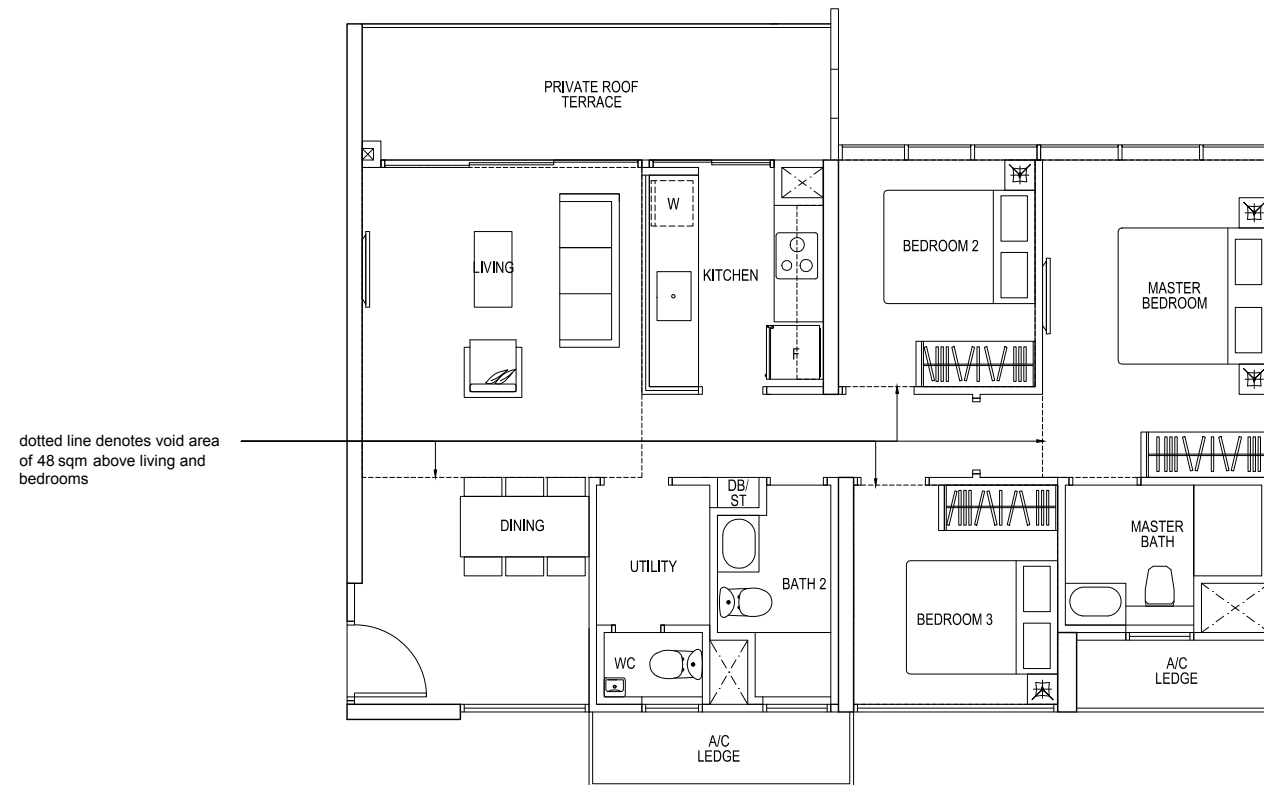
TYPE H C3r

3-BEDROOM

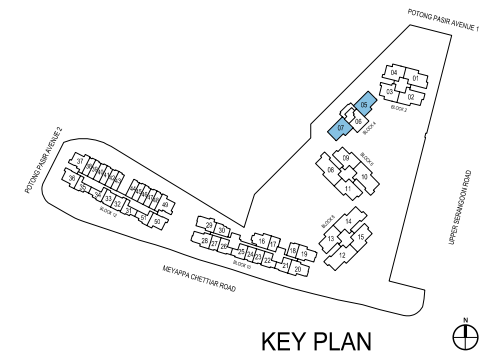
Total Area = 151 sqm
(Including Void Area of 48 sqm)

#18-05 HIGH CEILING (MIRROR)

#18-07 HIGH CEILING



Area includes A/C ledge, balcony, private roof terrace and void area. Some units are mirror images of the apartment plans shown in the brochure. Please refer to the key plans for orientation. The plans are subject to change as may be approved by the relevant authorities. All floor areas are approximate measurements only and are subject to government resurvey. Abbreviation: A/C ledge (Aircon Ledge), Private Roof Terrace, ST (Store), DB (Distribution Board), F (Fridge), W (Washing Machine).

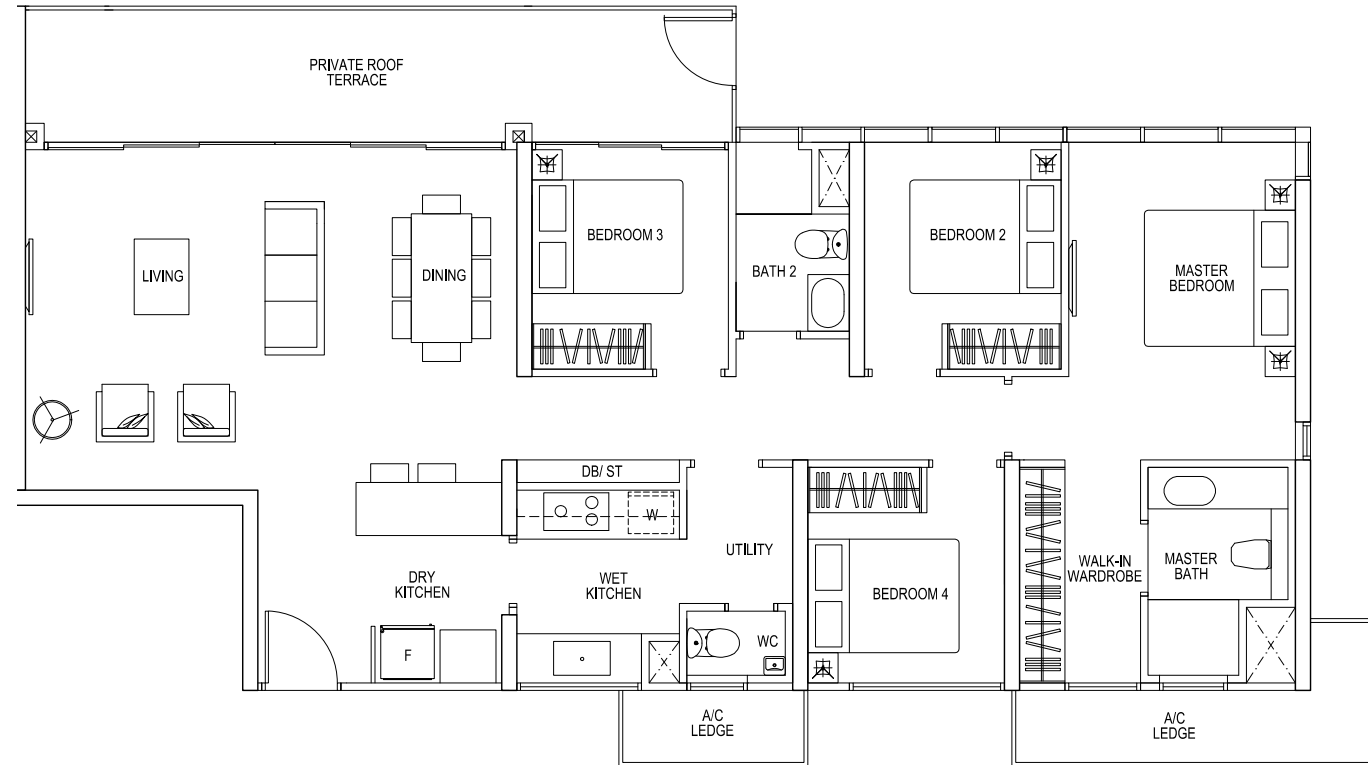


TYPE H D1p

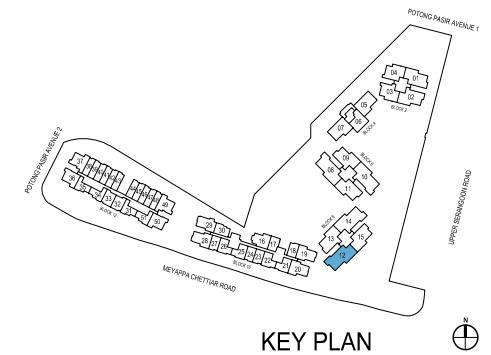
4-BEDROOM

Total Area = 140 sqm

#04-12



Area includes A/C ledge, balcony, private roof terrace and void area. Some units are mirror images of the apartment plans shown in the brochure. Please refer to the key plans for orientation. The plans are subject to change as may be approved by the relevant authorities. All floor areas are approximate measurements only and are subject to government resurvey. Abbreviation: A/C ledge (Aircon Ledge), Private Roof Terrace, ST (Store), DB (Distribution Board), F (Fridge), W (Washing Machine).



KEY PLAN



TYPE H D1

4-BEDROOM

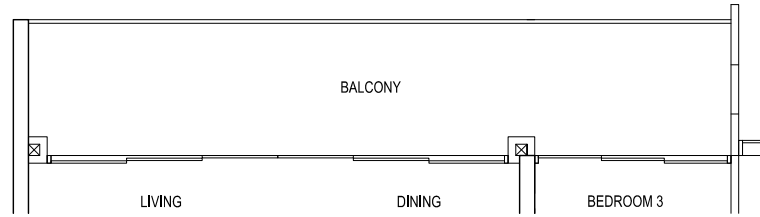
Total Area = 140 sqm

#06-08, #10-08, #14-08

#06-12, #10-12, #14-12

#07-08, #11-08,
#15-08

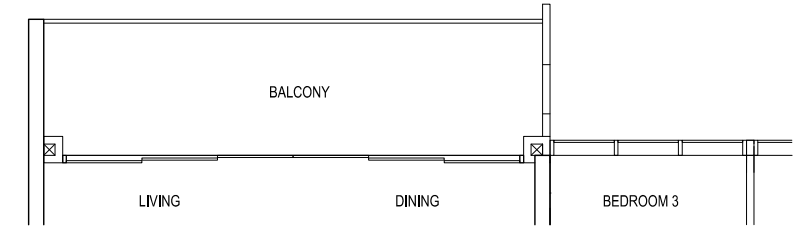
#05-12, #07-12,
#11-12, #15-12



TYPE H D1(1)

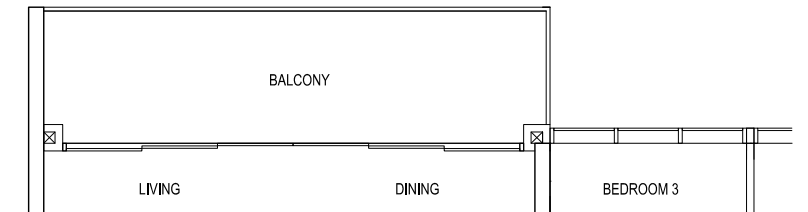
4-BEDROOM

Total Area = 136 sqm



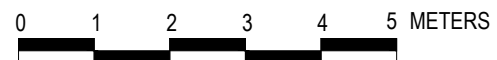
#08-08, #12-08, #16-08

#08-12, #12-12, #16-12

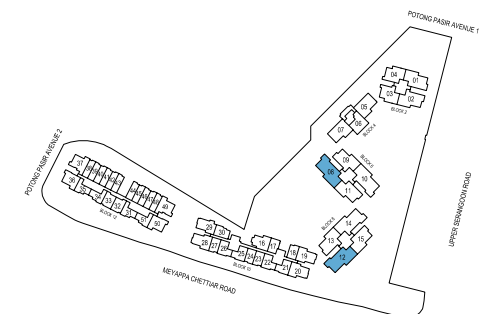


#09-08, #13-08, #17-08

#09-12, #13-12, #17-12



Area includes A/C ledge, balcony, private roof terrace and void area. Some units are mirror images of the apartment plans shown in the brochure. Please refer to the key plans for orientation. The plans are subject to change as may be approved by the relevant authorities. All floor areas are approximate measurements only and are subject to government resurvey. Abbreviation: A/C ledge (Aircon Ledge), Private Roof Terrace, ST (Store), DB (Distribution Board), F (Fridge), W (Washing Machine).



KEY PLAN

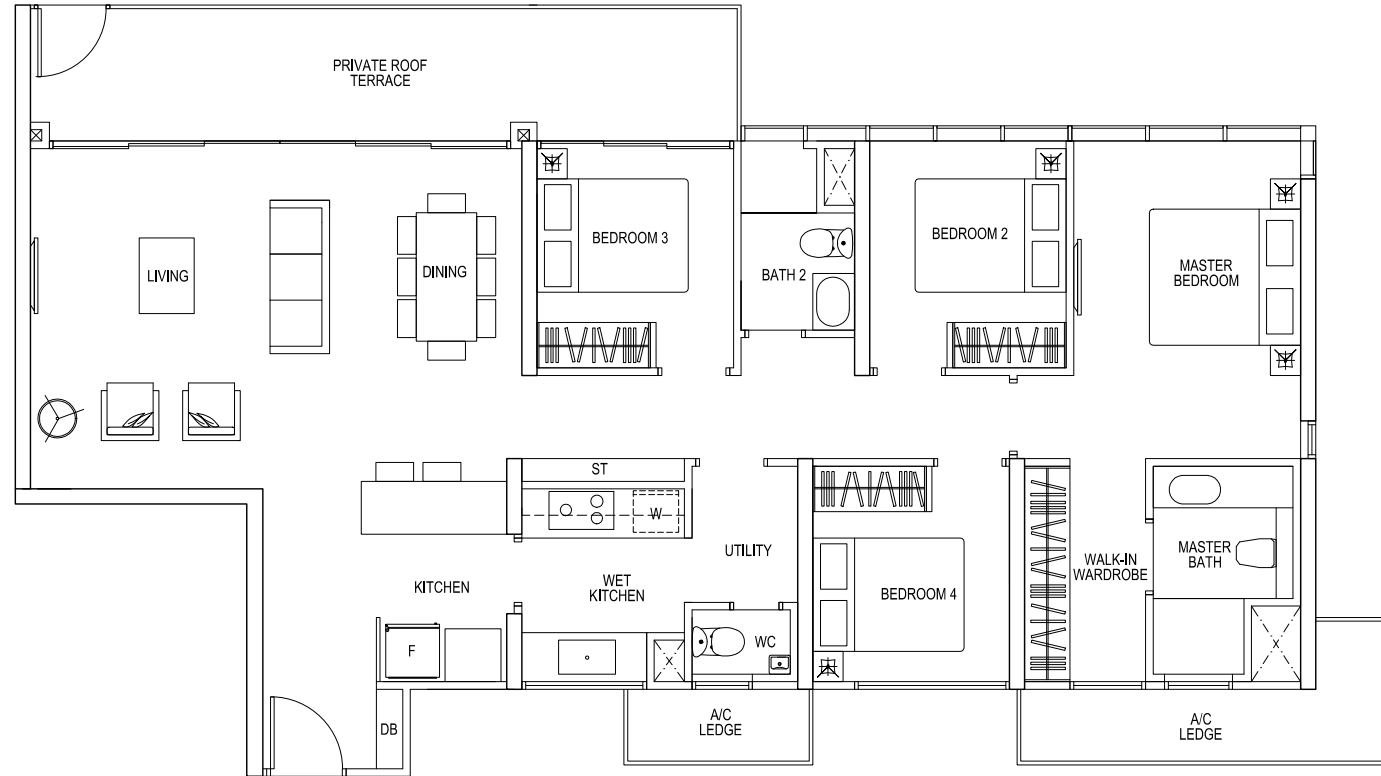


TYPE H D1ap

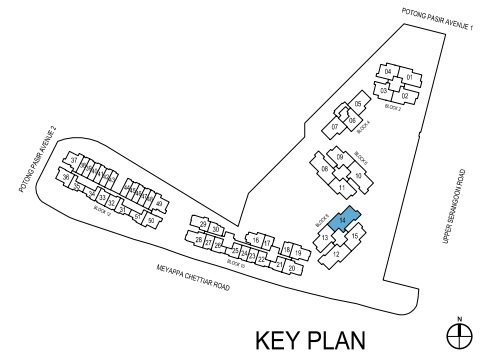
4-BEDROOM

Total Area = 142 sqm

#04-14



Area includes A/C ledge, balcony, private roof terrace and void area. Some units are mirror images of the apartment plans shown in the brochure. Please refer to the key plans for orientation. The plans are subject to change as may be approved by the relevant authorities. All floor areas are approximate measurements only and are subject to government resurvey. Abbreviation: A/C ledge (Aircon Ledge), Private Roof Terrace, ST (Store), DB (Distribution Board), F (Fridge), W (Washing Machine).



TYPE H D1a

4-BEDROOM

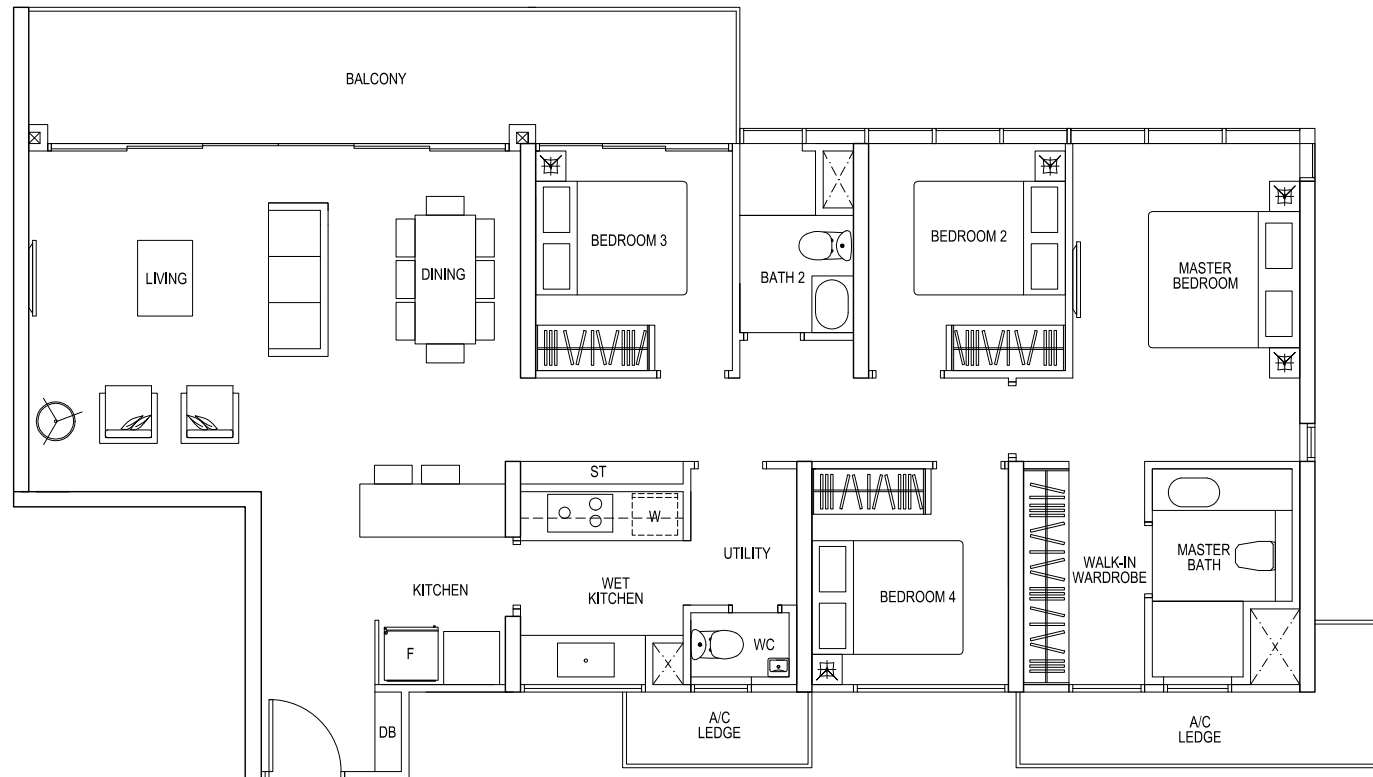
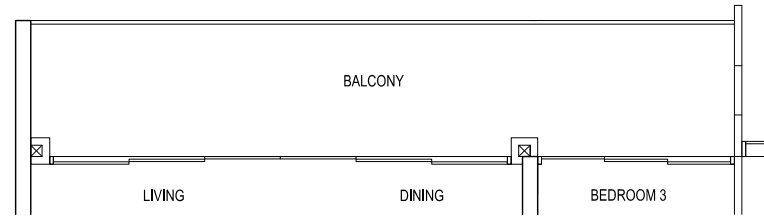
Total Area = 142 sqm

#06-10, #10-10, #14-10

#06-14, #10-14, #14-14

#07-10, #11-10,
#15-10

#05-14, #07-14,
#11-14, #15-14

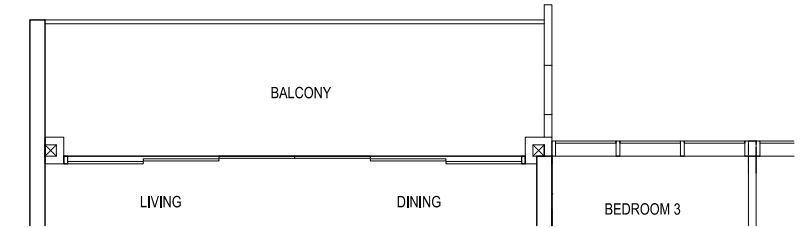


Area includes A/C ledge, balcony, private roof terrace and void area. Some units are mirror images of the apartment plans shown in the brochure. Please refer to the key plans for orientation. The plans are subject to change as may be approved by the relevant authorities. All floor areas are approximate measurements only and are subject to government resurvey. Abbreviation: A/C ledge (Aircon Ledge), Private Roof Terrace, ST (Store), DB (Distribution Board), F (Fridge), W (Washing Machine).

TYPE H D1a(1)

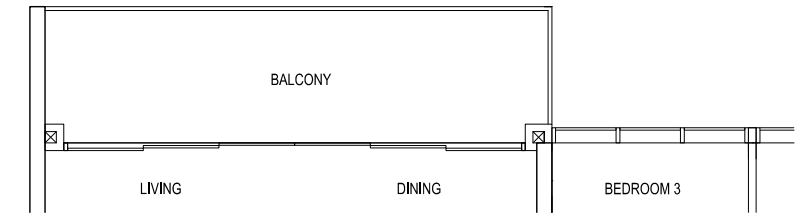
4-BEDROOM

Total Area = 138 sqm



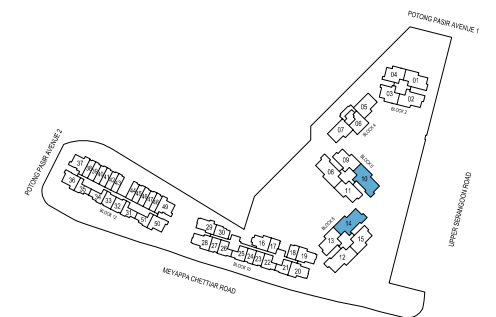
#08-10, #12-10, #16-10,

#08-14, #12-14, #16-14



#09-10, #13-10, #17-10,

#09-14, #13-14, #17-14



KEY PLAN



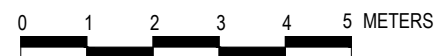
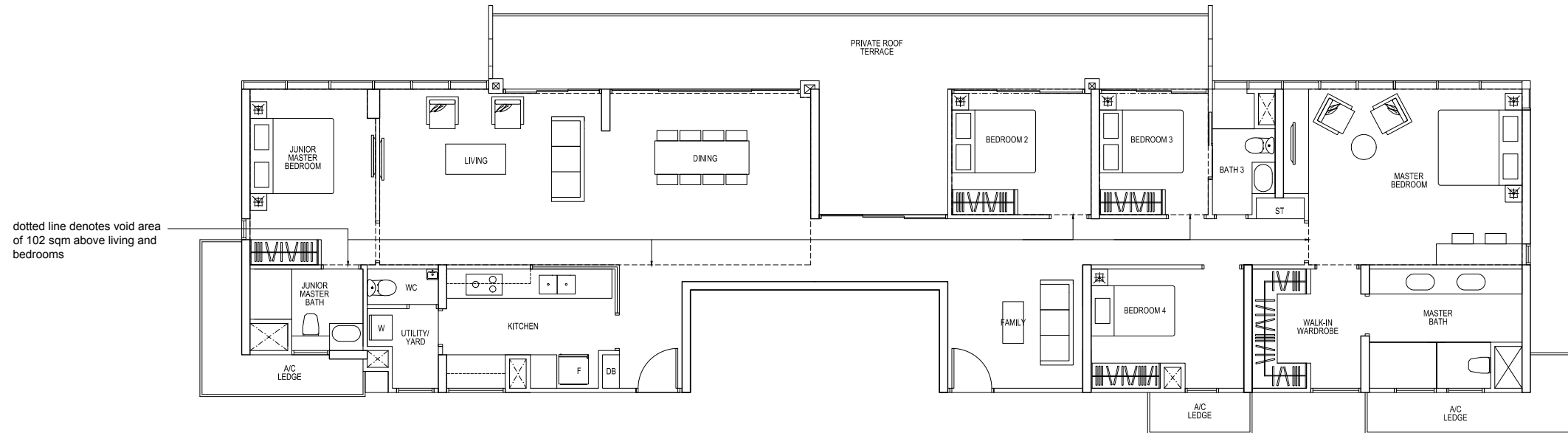
TYPE PH1

5-BEDROOM PENTHOUSE

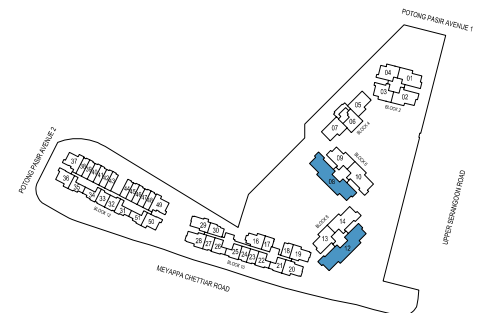
Total Area = 350 sqm
(Including Void Area of 102 sqm)

#18-08 HIGH CEILING

#18-12 HIGH CEILING



Area includes A/C ledge, balcony, private roof terrace and void area. Some units are mirror images of the apartment plans shown in the brochure. Please refer to the key plans for orientation. The plans are subject to change as may be approved by the relevant authorities. All floor areas are approximate measurements only and are subject to government resurvey. Abbreviation: A/C ledge (Aircon Ledge), Private Roof Terrace, ST (Store), DB (Distribution Board), F (Fridge), W (Washing Machine).



KEY PLAN



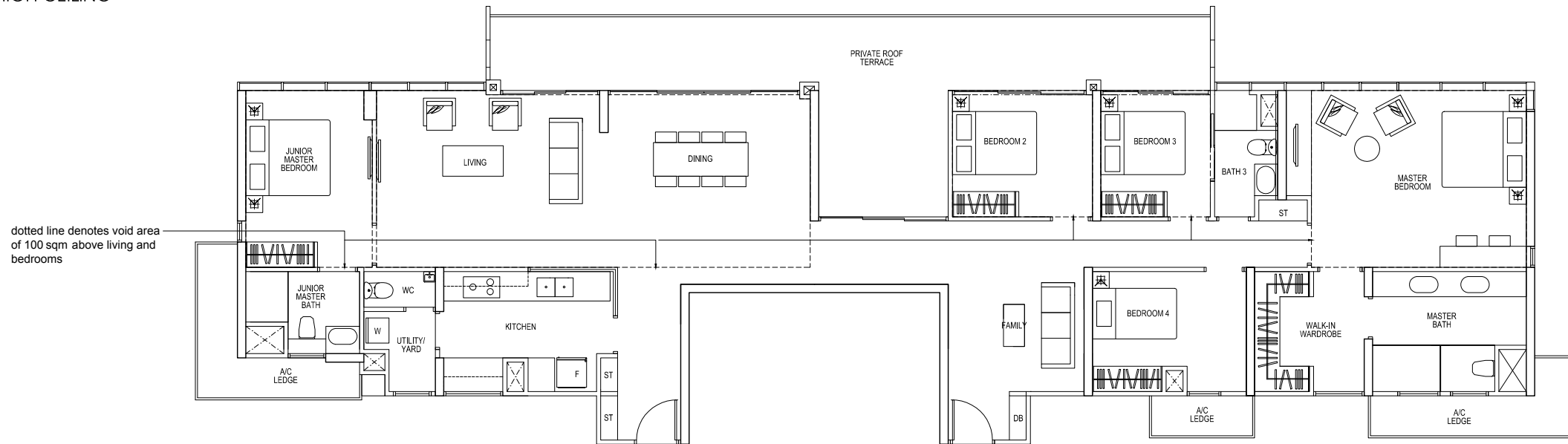
TYPE PH2

5-BEDROOM PENTHOUSE

Total Area = 353 sqm
(Including Void Area of 100 sqm)

#18-09 HIGH CEILING

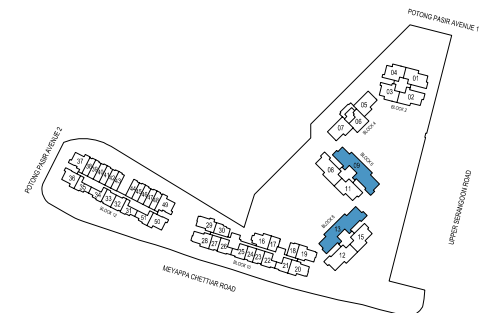
#18-13 HIGH CEILING



dotted line denotes void area of 100 sqm above living and bedrooms



Area includes A/C ledge, balcony, private roof terrace and void area. Some units are mirror images of the apartment plans shown in the brochure. Please refer to the key plans for orientation. The plans are subject to change as may be approved by the relevant authorities. All floor areas are approximate measurements only and are subject to government resurvey. Abbreviation: A/C ledge (Aircon Ledge), Private Roof Terrace, ST (Store), DB (Distribution Board), F (Fridge), W (Washing Machine).



KEY PLAN



Developer: MCC Land (Potong Pasir) Pte Ltd (UEN: 201424543R) • Development Name: The Poiz Residences and The Poiz Centre • Developer's License No: CI187 dated 01 October 2015 • Tenure of Land: 99 years commencing on 17 November 2014 • Mukim/Lot No.: Lot 10559A of MK17, Singapore • Building Plan No: A1720-00015-2014-BP01 dated 06 October 2015 • Encumbrances on the Land: (1) Caveats IE/97477C and IE/111820L in favour of Malayan Banking Berhad, Singapore Branch. (2) Caveat IE/112593C in favour of China Taiping Insurance (Singapore) Pte Ltd • Expected TOP Date: 19 August 2019 • Expected Date of Legal Completion: 19 August 2022

Brochure: Whilst every reasonable care has been taken in preparing this brochure, the developer and its agents cannot be held responsible for any inaccuracies. All statements are believed to be correct but are not to be regarded as statements or representations of fact. All information and details stated in this brochure are correct as at the time of printing. • Specification: All information and specifications are current at the time of going to press and are subject to change as may be required and cannot form part of the contract. All plans are subject to any amendments approved or may be approved by the relevant authority. Visual representations including (architectural) models, drawings, photographs / pictures and artists' renderings are impression only, while illustrations of interiors are only decor suggestions and none to be regarded as representation facts. Floor areas are approximate measurements and subject to final survey • Sales & Purchase Agreement: The Sales & Purchase Agreement shall form the entire agreement between us as the Developer and the Purchaser and shall supersede all statements, representations or promises made prior to the signing of the Sale & Purchase Agreement and shall in no way be modified by any statements, representation or promises made by us or the marketing agent.